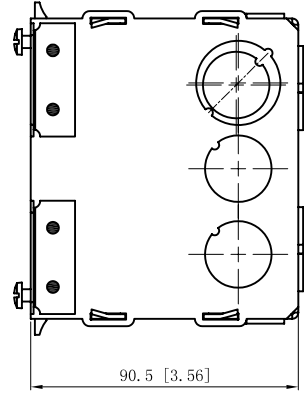
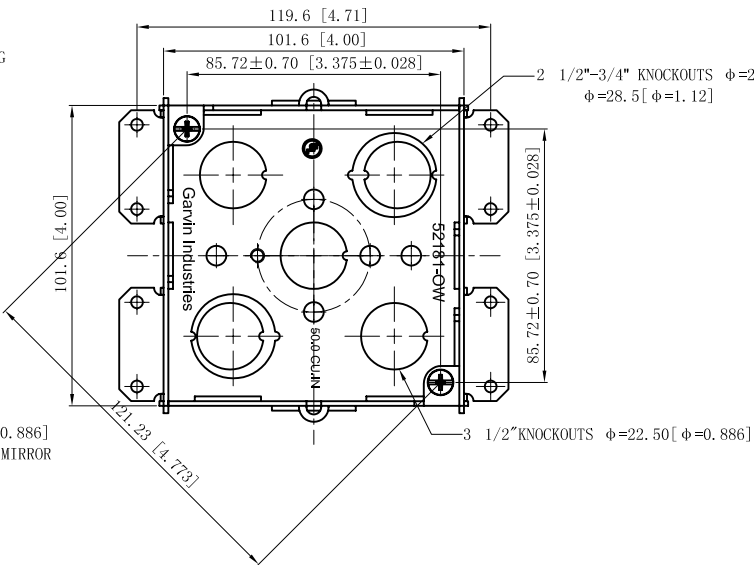
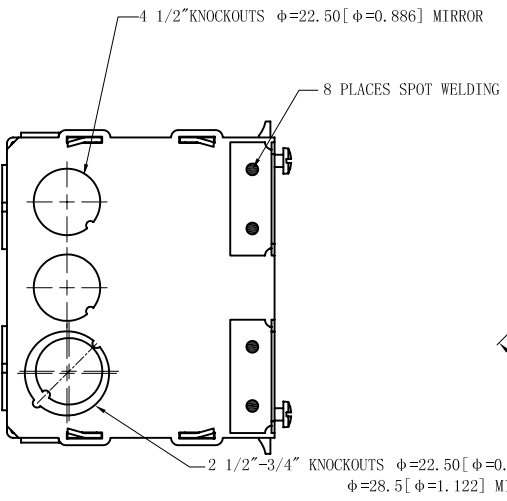
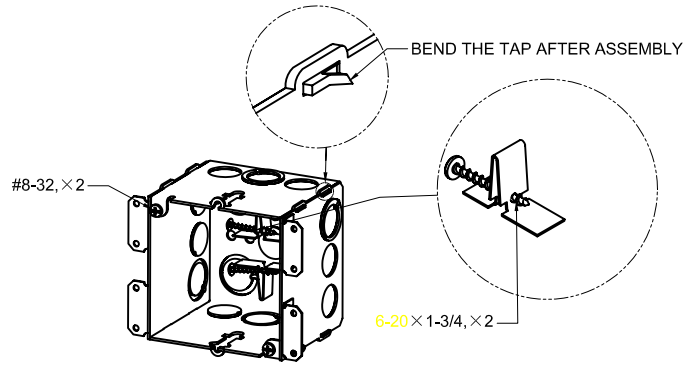
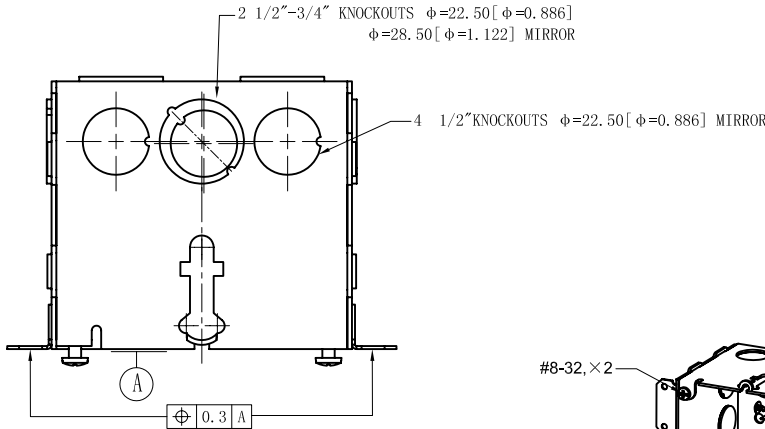


SIDES	BOTTOM
8 1/2" MOON KNOCKOUTS	3 1/2" KNOCKOUTS
4 1/2"-3/4" MOON KNOCKOUTS	2 1/2"-3/4" MOON KNOCKOUTS
2 PCS 8-32x1/2 Screws Installed	
2 PCS 6-20x1-3/4 Tapping screws Installed	
Material: Steel-0.0625"-G60 Galvanized	



DESCRIPTION
TRADE REFERENCE TERMS

This data sheet is for reference only .GARVIN INDUSTRIES reserves the right to make changes to the design without prior notice.

STANDARD PACKING	<h1 style="text-align: center;">GARVIN INDUSTRIES</h1>			
10 PCS				TITLE
	SIZE	DWG NO.	REV	
	A4	52181-OW	A	
		DATA SHEET		