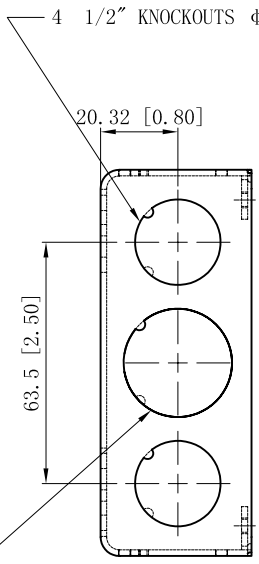
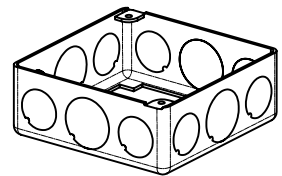
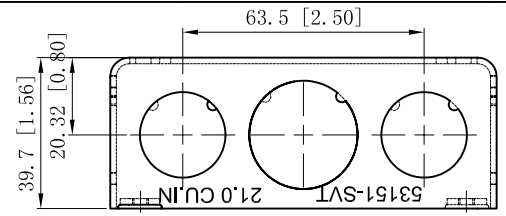
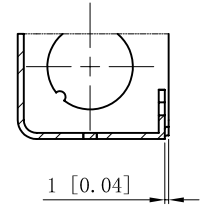
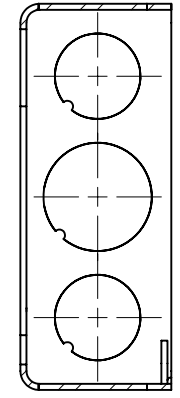
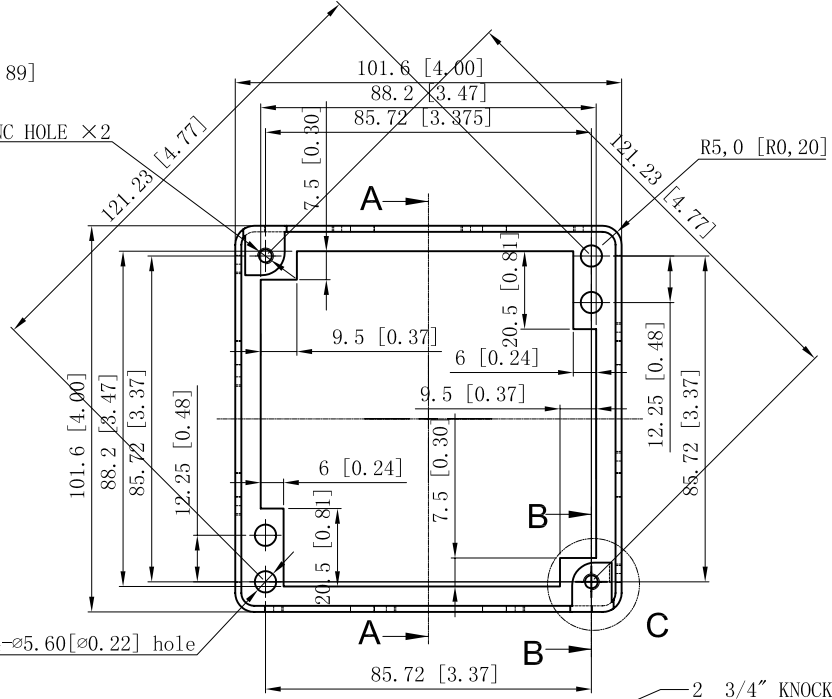


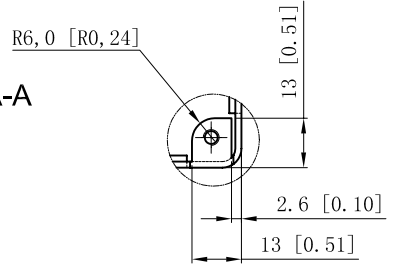
SIDES	BOTTOM
8 1/2" KNOCKOUTS	
4 3/4" KNOCKOUTS	
2 PCS 8-32×1/2 Screws Installed	
Material:Steel-0.0625"-G60 Galvanized	



#8-32 UNC HOLE ×2



CUTAWAY VIEW B-B

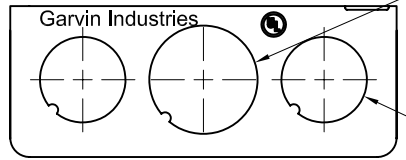


VIEW C

CUTAWAY VIEW A-A

4 1/2" KNOCKOUTS $\phi=22.5[\phi=0.89]$

2 3/4" KNOCKOUTS $\phi=28.5[\phi=1.12]$



This data sheet is for reference only. GARVIN INDUSTRIES reserves the right to make changes to the design without prior notice.

DESCRIPTION
TRADE REFERENCE TERMS

STANDARD PACKING	GARVIN INDUSTRIES		
	4" SQUARE EXTENSION RINGS 1-1/2" DEEP		
50 PCS	SIZE	DWG NO.	REV
	A4	53151-SVT	A
DATA SHEET			