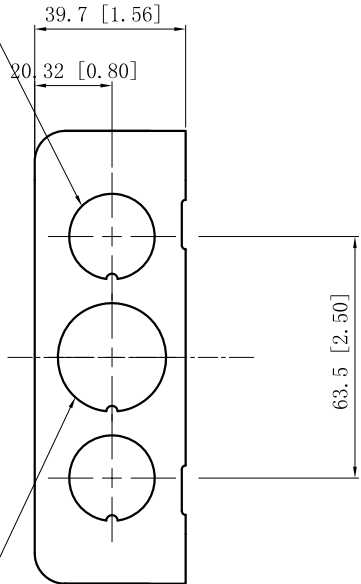


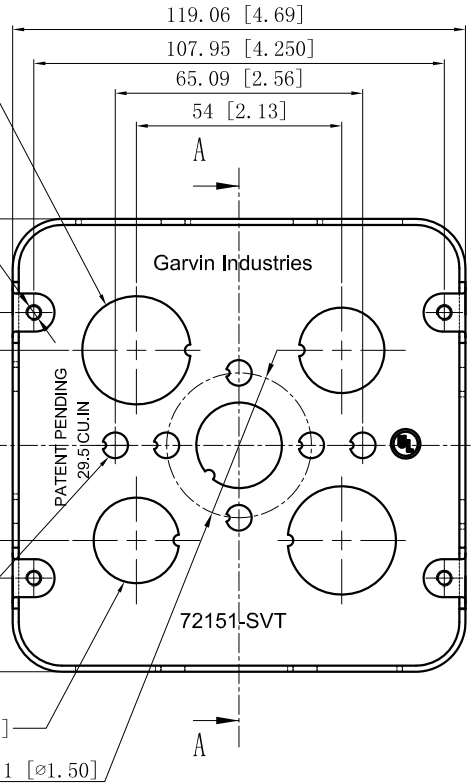
SIDES	BOTTOM
8 1/2" KNOCKOUTS	3 1/2" KNOCKOUTS
4 1/2"-3/4" MOON KNOCKOUTS	2 3/4" KNOCKOUTS
	6 KNOCKOUT
2 PCS 8-32x1/2 Screws Installed	
Material: Steel-0.0625"-G60 Galvanized	

4 1/2" KNOCKOUTS $\phi=22.5$ [$\phi=0.89$]
MIRROR



2x3/4" KNOCKOUTS $\phi=28.5$ [$\phi=1.12$]

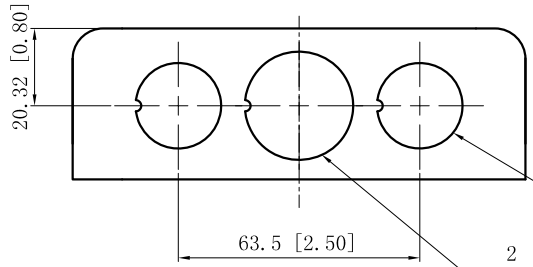
4-#8-32 UNC HOLE



6 KNOCKOUTS $\phi=6.75$ [$\phi=0.27$]

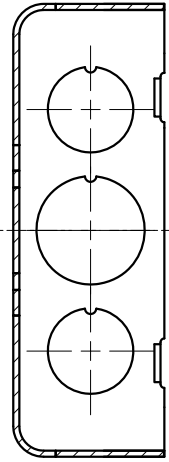
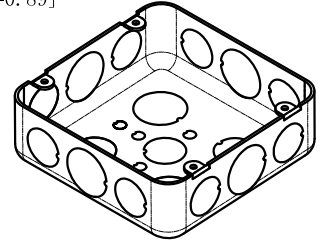
2 1/2" KNOCKOUTS $\phi=22.5$ [$\phi=0.89$]

$\phi 38.1$ [$\phi 1.50$]



4 1/2" KNOCKOUTS $\phi=22.5$ [$\phi=0.89$]
MIRROR

2 3/4" KNOCKOUTS $\phi=28.5$ [$\phi=1.12$]
MIRROR



CUTAWAY VIEW A-A

DESCRIPTION
TRADE REFERENCE TERMS

This data sheet is for reference only. GARVIN INDUSTRIES reserves the right to make changes to the design without prior notice.

STANDARD PACKING	GARVIN INDUSTRIES		
	TITLE 4-11/16" SQUARE BOXS EXTENSION RINGS 1-1/2"		
25 PCS	SIZE A4	DWG NO. 72151-SVT	REV A
	DATA SHEET		