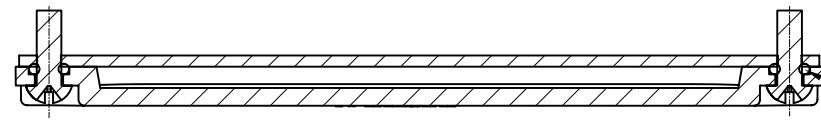
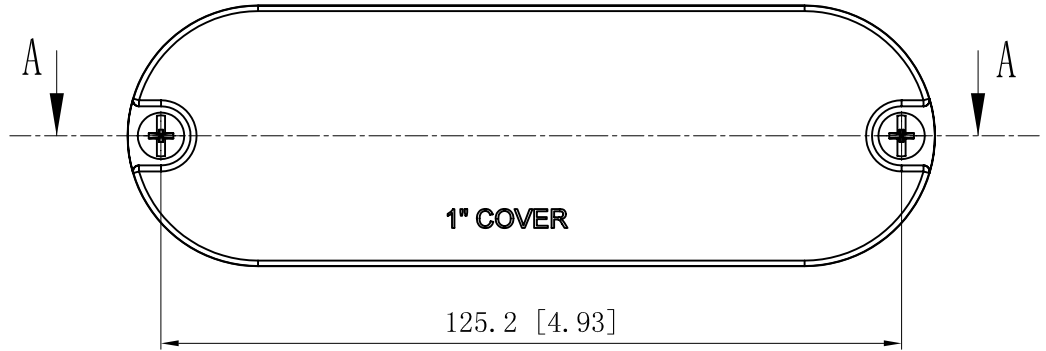
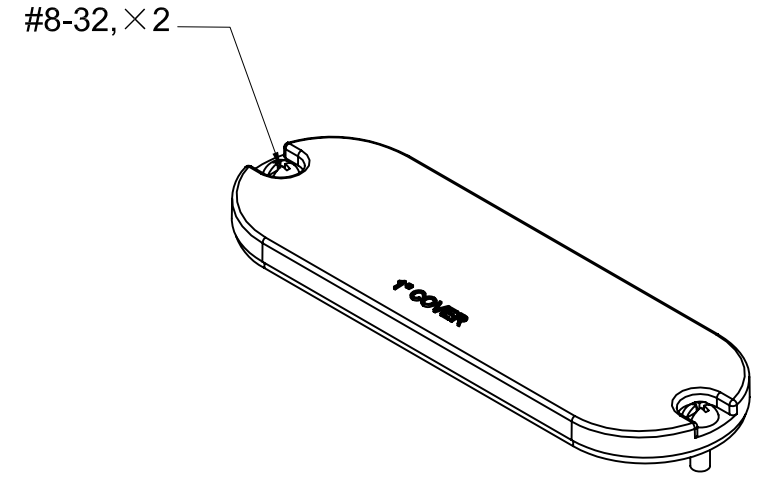


SIDES	BOTTOM
2 PCS #8-32×1/2 Screws Installed	
2 PCS 3.55×1.8G (GB34521-92) O-Ring Installed	
Material: Aluminum Powder Coating Silver Grey	



CUTAWAY VIEW A-A



O-Ring

This data sheet is for reference only .GARVIN INDUSTRIES reserves the right to make changes to the design without prior notice.

DESCRIPTION
TRADE REFERENCE TERMS

STANDARD PACKING
50/100 PCS

<b>GARVIN INDUSTRIES</b>			
ALUMINUM CONDUIT BODY COVERS			
SIZE	DWG NO.	REV	
A4	CG-100	A	
DATA SHEET			