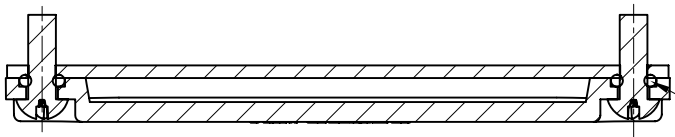
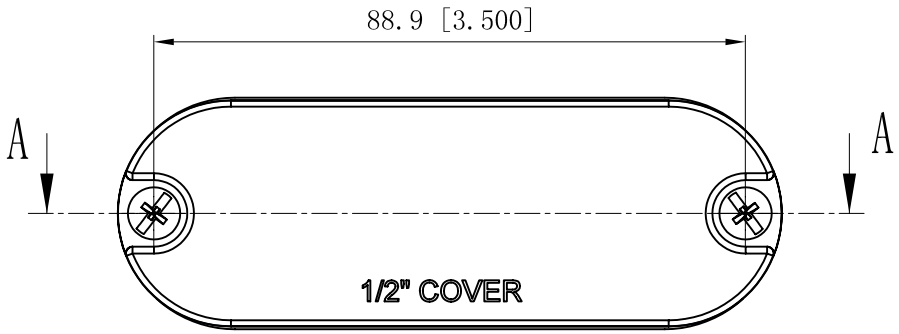
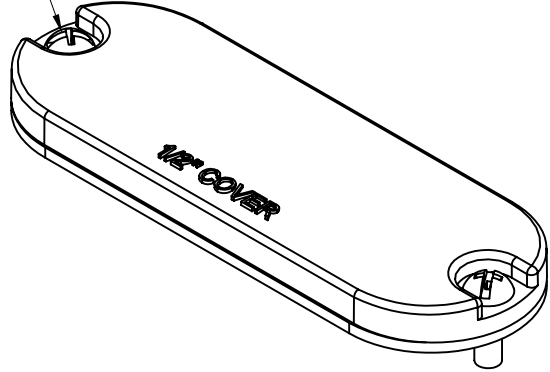


SIDES	BOTTOM
2 PCS #8-32×1/2 Screws Installed	
2 PCS 3.55×1.8G (GB34521-92) O-Ring Installed	
Material: Aluminum Powder Coating Silver Grey	



VIEW A-A

#8-32, × 2



O-Ring

DESCRIPTION
TRADE REFERENCE TERMS

This data sheet is for reference only .GARVIN INDUSTRIES reserves the right to make changes to the design without prior notice.

STANDARD PACKING	<h1 style="text-align: center;">GARVIN INDUSTRIES</h1> <h2 style="text-align: center;">ALUMINUM CONDUIT BODY COVERS</h2>		
50/200 PCS			
SIZE	DWG NO.	REV	
A4	CG-75	A	
DATA SHEET			