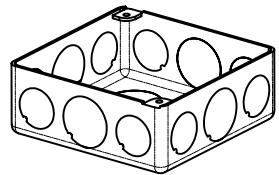
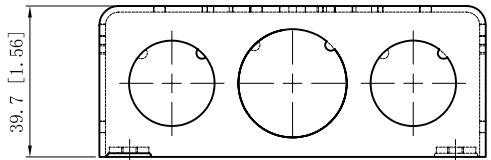


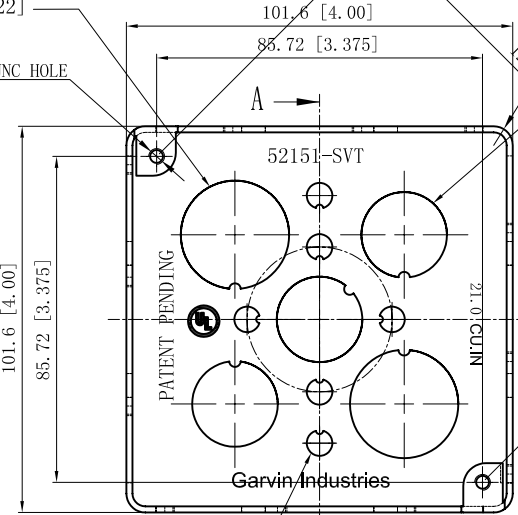
SIDES	BOTTOM
8 1/2" KNOCKOUTS	6 KNOCKOUTS
4 3/4" KNOCKOUTS	3 1/2" KNOCKOUTS
	2 3/4" KNOCKOUTS

Material: Steel-0.0625"-G60 Galvanized



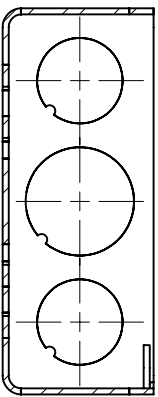
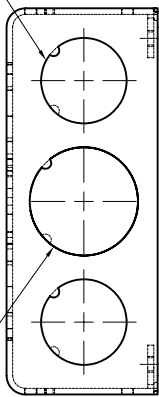
4 1/2" KNOCKOUTS $\phi=22.50$ [$\phi=0.886$]
 2 3/4" KNOCKOUTS $\phi=28.50$ [$\phi=1.122$]

2-#8-32 UNC HOLE



R5.0 [R0.20]

3 1/2" KNOCKOUTS $\phi=22.50$ [$\phi=0.886$]

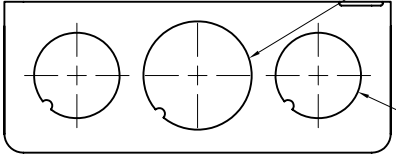


CUTAWAY VIEW A-A

2 3/4" KNOCKOUTS $\phi=28.50$ [$\phi=1.122$]

6 KNOCKOUTS $\phi=6.75$ [$\phi=0.266$]

2 3/4" KNOCKOUTS $\phi=28.50$ [$\phi=1.122$]



4 1/2" KNOCKOUTS $\phi=22.50$ [$\phi=0.886$]

This data sheet is for reference only. GARVIN INDUSTRIES reserves the right to make changes to the design without prior notice.

DESCRIPTION
TRADE REFERENCE TERMS

STANDARD PACKING
50 PCS

GARVIN INDUSTRIES			
TITLE 4" SQUARE BOXES (1-1/2" DEEP)			
SIZE A4	DWG NO. 52151-SVT	REV B	
DATA SHEET			