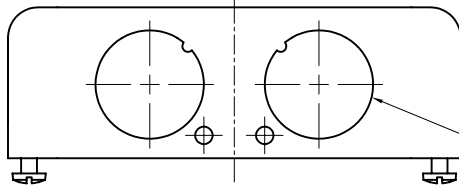
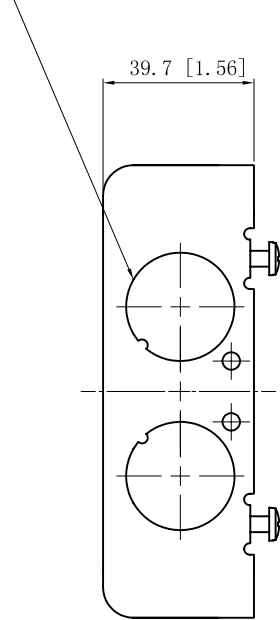


SIDES	BOTTOM
8 3/4" KNOCKOUTS	2 1/2" KNOCKOUTS
	2 3/4" KNOCKOUTS
	1 Ground Hump
2 PCS 8-32x1/2 Screws Installed	
Material: Steel-0.0625"-G60 Galvanized	

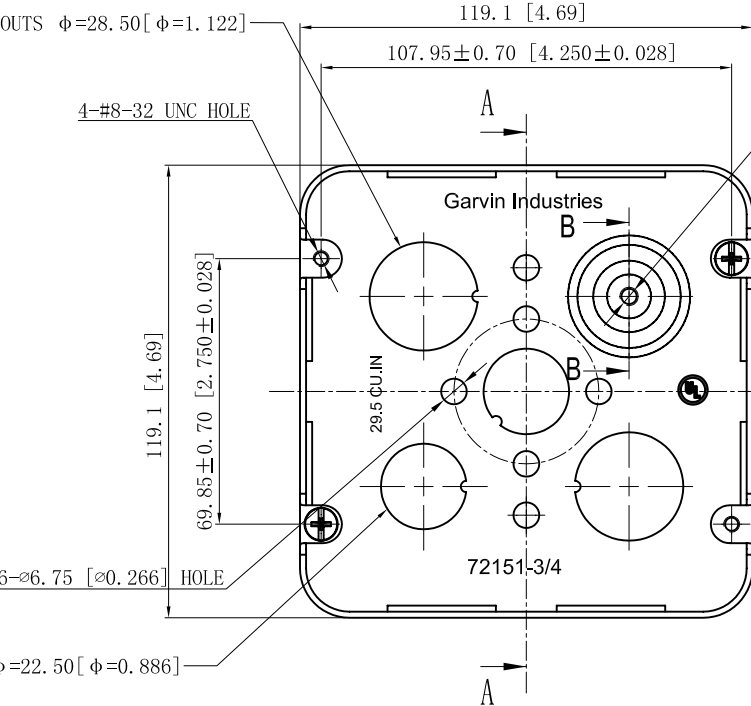


4 3/4" KNOCKOUTS  $\phi=28.50$  [ $\phi=1.122$ ]  
MIRROR

4 3/4" KNOCKOUTS  $\phi=28.50$  [ $\phi=1.122$ ]  
MIRROR

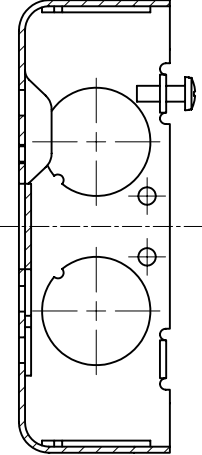
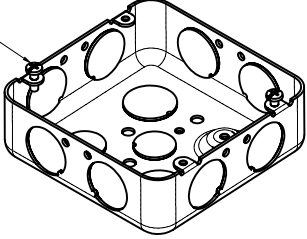


2 3/4" KNOCKOUTS  $\phi=28.50$  [ $\phi=1.122$ ]



#10-32 UNF HOLE

#8-32, x2



CUTAWAY VIEW A-A

2 1/2" KNOCKOUTS  $\phi=22.50$  [ $\phi=0.886$ ]

This data sheet is for reference only. GARVIN INDUSTRIES reserves the right to make changes to the design without prior notice.

DESCRIPTION
TRADE REFERENCE TERMS

STANDARD PACKING
25 PCS

<b>GARVIN INDUSTRIES</b>		
TITLE 4-11/16" SQUARE BOXS & EXTENSION RINGS (1-1/2")		
SIZE A4	DWG NO. 72151-3/4	REV B
DATA SHEET		