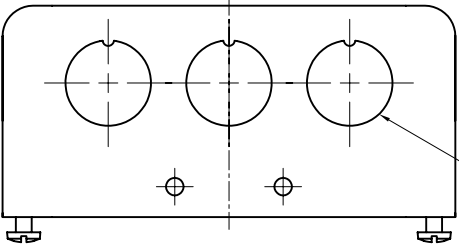
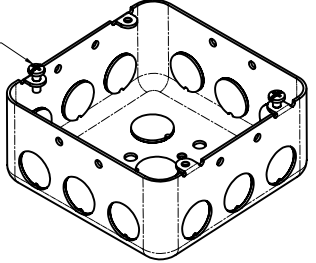


SIDES	BOTTOM
12 1/2" KNOCKOUTS	2 1/2" KNOCKOUTS
	2 3/4" KNOCKOUTS
	1 Ground Hump
2 PCS 8-32x1/2 Screws Installed	
Material: Steel-0.0625"-G60 Galvanized	



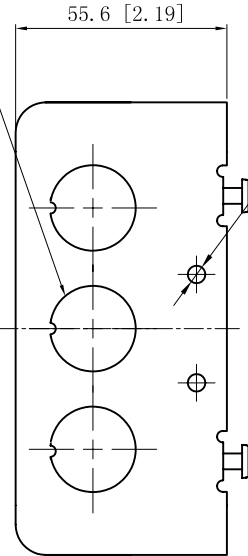
6 x 1/2" KNOCKOUTS $\phi = 22.50$ [$\phi = 0.886$]
MIRROR



#8-32, x2

#10-32 UNF HOLE

6 x 1/2" KNOCKOUTS $\phi = 22.50$ [$\phi = 0.886$]
MIRROR



55.6 [2.19]

2 x 3/4" KNOCKOUTS $\phi = 28.5$ [$\phi = 1.12$]

119.1 [4.69]

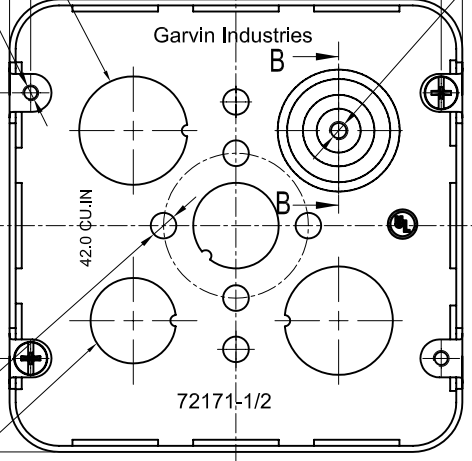
107.95 [4.250]

4-#8-32 UNC HOLE

8- $\phi 4.2$ [$\phi 0.17$] HOLE

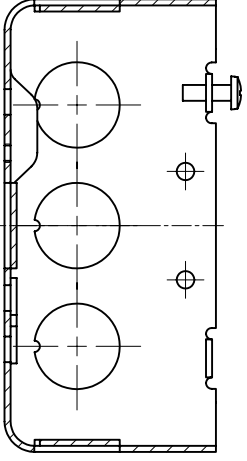
119.1 [4.69]
69.85 [2.750]

6- $\phi 6.75$ [$\phi 0.266$] HOLE

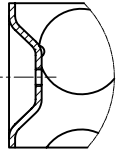


72171-1/2

42.0 ϕ U.I.N



CUTAWAY VIEW A-A



CUTAWAY VIEW B-B

2 x 1/2" KNOCKOUTS $\phi = 22.50$ [$\phi = 0.886$]

This data sheet is for reference only. GARVIN INDUSTRIES reserves the right to make changes to the design without prior notice.

DESCRIPTION
TRADE REFERENCE TERMS

STANDARD PACKING
25 PCS

GARVIN INDUSTRIES		
TITLE 4-11/16" SQUARE "DRAWN" BOXES (2-1/8" DEEP)		
SIZE A4	DWG NO. 72171-1/2	REV A
DATA SHEET		