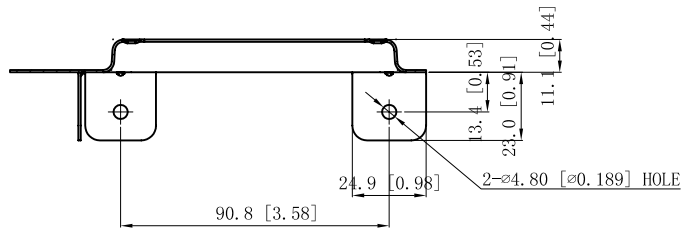
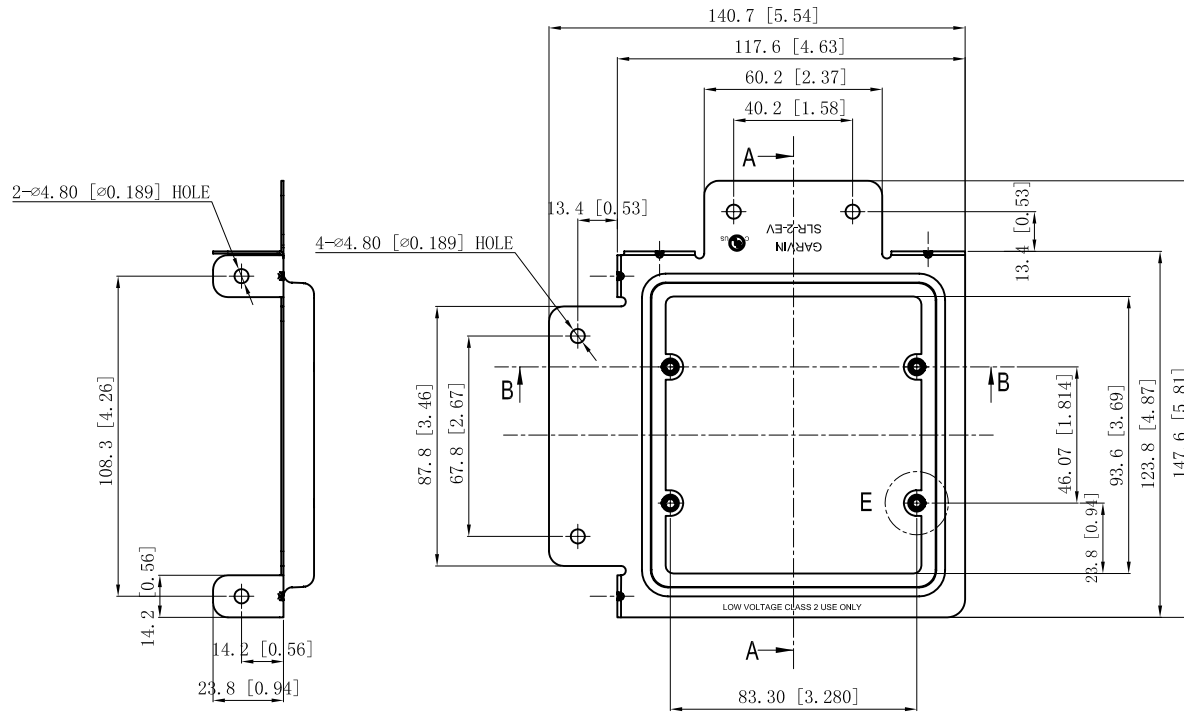
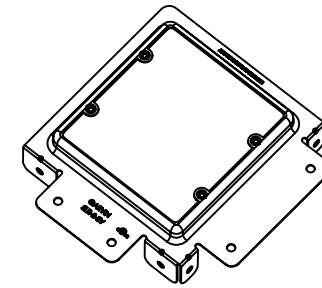


SIDES	BOTTOM
Material: Steel-0.0303~MIN-G60 Galvanized	

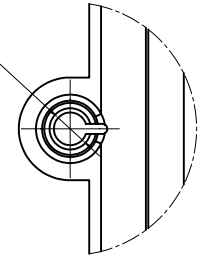


CUTAWAY VIEW B-B



CUTAWAY VIEW A-A

ø2.77 [ø0.109]
IT IS PUNCHING THREAD HOLE
FOR FITTING #6-32 SCREW
[SEE NOTE 9]



VIEW E

DESCRIPTION
TRADE REFERENCE TERMS

This data sheet is for reference only .GARVIN INDUSTRIES reserves the right to make changes to the design without prior notice.

STANDARD PACKING	GARVIN INDUSTRIES		
50 PCS			
TITLE	LV-S-2G LOW VOLTAGE DOUBLE GANG BRACKET		
SIZE	DWG NO.	SLR-2-EV	REV
A4		DATA SHEET	