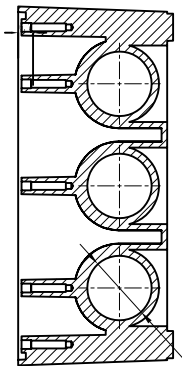
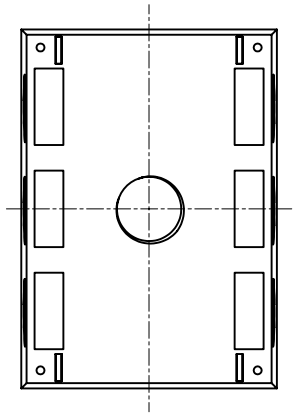
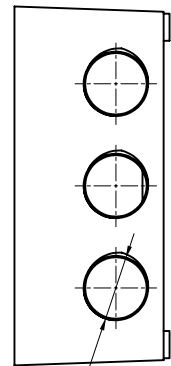
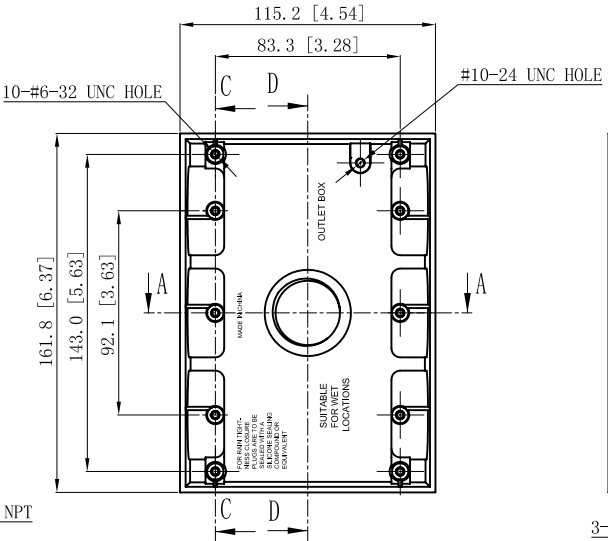


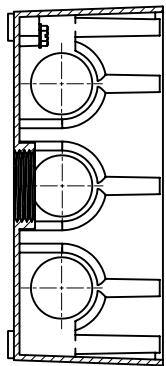
SIDES	BOTTOM
6 1" NPT	1" NPT
1 PCS 10-24x1/4 Screws Installed	
2 PCS #18x1/4 Screws Pack In Poly-bag seperately	
2 PCS WPCP50 Pack In Poly-bag seperately	
2 PCS WP2754-20 Pack In Poly-bag seperately	
Material:ALUMINUM Powder Coating Gray	



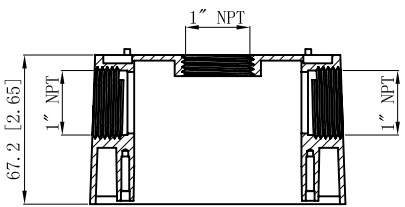
CUTAWAY VIEW C-C



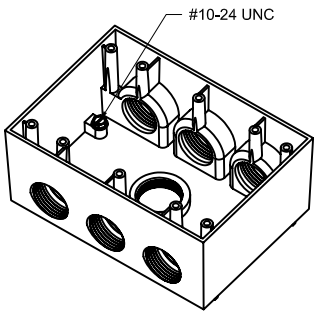
3-1" NPT



CUTAWAY VIEW B-B



CUTAWAY VIEW A-A



#10-24 UNC

DESCRIPTION
TRADE REFERENCE TERMS

This data sheet is for reference only .GARVIN INDUSTRIES reserves the right to make changes to the design without prior notice.

STANDARD PACKING	GARVIN INDUSTRIES		
	3-GANG WEATHERPROOF BOXES		
12 PCS	TITLE		REV
	WP3G1007		
SIZE		DWG NO.	DATA SHEET
A4			